



Test Report No. IL3326900.01 .
1953 - " 12

Details of order	
Applicant's name
Address	58
Date of Testing and Order Number	25/02/2026
	PO33269

Description of Sample	
Sample Description
Model/Type Reference	MEXS
Trade names	LEA /
Country of Origin	CHINA
Rating	220-240Vac 50/60Hz CLASS II IP20 MAX5W

Test Result	
--------------------	--

This document may be used only in full
The test results in this report apply only to the tested item.

Israeli Standard	2021 , : ,1 20 "
	2019 , - 2.22 20 "

Date	Signature	Tested by
23/03/2026		

--



Test Report No. IL3326900.01 .
1953 - " 12

ITL-		"			"
23/03/2026	26/01/2026	6248108.50A 6248108.50B	DEKRA Testing and Certification (Shanghai) Ltd	LEA (MEXS)	<input checked="" type="checkbox"/> Safety
23/03/2026	17/03/2026	ZHT-260310119E01	GUANDONG ZHONGHAN TESTING TECHNOLOGY CO LTD	LEA (MEXS)	<input checked="" type="checkbox"/> EMC
23/03/2026	26/01/2026	6248108.50A 6248108.50B	DEKRA Testing and Certification (Shanghai) Ltd	6	<input checked="" type="checkbox"/> Driver
23/03/2026	26/01/2026	6248108.50A 6248108.50B	DEKRA Testing and Certification (Shanghai) Ltd	LEA (MEXS)	<input checked="" type="checkbox"/> Photo Biology
			TUV SUD CB SG PSB-BT-03695	3.6V 2500 mAh 18Wh 1S2P Li18650	<input checked="" type="checkbox"/> 62133-2

:

: ,1 20 "

	/	/	20 " 1
		General Requirements	0.3
	1 20 " .1 2.22 20 " .2	,IEC 60598-2 - ,1 20 " , IEC 60598-2 - ()	0.3.201
			0.3.202
		:	0.3.203
		- ballast	0.5
	CLASS II	() CLASS I, II or III	2.2
	IP20	IP	2.3



Test Report No. IL3326900.01 .
1953 - " 12

			2.5 ,2.4
			3
	נבדק ללא פתיל ותקע זינה חיצוני. חיבור הזנה ישיר להדקי חיבור AC (terminal block).		4.7
		IEC 60068-2-75	4.13.1
		Suspensions, fixings and means of adjustment	4.14
	Lamp Classification Group: Exempt(RG0)	62471 " IEC/TR 62778	4.24
		(LED –) 62031	
		External and Internal Wiring	.5
	CLASS II	Provision for Earthing	.7
		Protection against Electric Shock	.8
	IP 20	Resistance to dust, solid objects and moisture	.9
		Insulation resistance & electric strength	.10
		Creepage Distance and Clearances	.11
		Endurance test and thermal test	.12
		Resistance to heat, fire and Tracking	.13
		Terminals	.14



Test Report No. IL3326900.01 .
1953 - " 12

	/	/	" 20 2.22
		Marking	22.6
		Construction	22.7
			22.11
		Endurance test and thermal test	22.13
		Resistance to dust and moisture	22.14
		Resistance to heat, fire and tracking	22.16
		Photometric data	22.17
		Changeover operation	22.18
		High temperature operation	22.19
		Battery chargers for self-contained emergency luminaires	22.20
		Test devices for emergency operation	22.21
		Batteries for self-contained emergency luminaires	A
		Luminaire classification	B
		Luminance measurements	C
		Requirements for self-contained portable emergency luminaires	E

Test Report No. IL3326900.01 .
1953 - " 12

EMC

	/	EMC
		15 961 "
		EN61547
		EN61000-3-2
		EN61000-3-3

Marking Plate

Made in PRC
חזון איש 58 בני ברק
היבואן: י.מ. פתרונות חירום בע"מ
0548421418
www.ym-lighting.co.il

 **Part No.: MEXS**
Emergency Power: 1.5W
Input: 220-240V AC 50/60Hz 5W Max.
Operating temperature: 0°C-40°C
LED: 24pcsx3V Max.0.5W/pcs, 3S8P
Battery: 3.6V 2500mAh 9Wh
Operating temperature: 0°C-60°C Li-ion battery 11NR19/66
101# JingFeng Road 314419 Haining ZheJiang Province PEOPLE'S REPUBLIC OF CHINA

Self Test  

Summary of defects in test apparatus

Notes



Test Report No. IL3326900.01 .
1953 - " 12

Critical components

LED emergency driver						
PCB for emergency driver	C	GRANDWORK ELECTRONICS CO LTD	GLW-2	V-0; 130 °C UL (E343783)	IEC 61347-2-7 IEC 61347-2-13	Tested in appliance
PCB for emergency driver (alternative)	C	WELL-TECH (HUIZHOU) CIRCUIT CO LTD	WD-M	V-0; 130 °C UL (E363740)	IEC 61347-2-7 IEC 61347-2-13	Tested in appliance
Connector to battery (CON2)	C	Yueqing Baizhan Electronic Co., Ltd	XH-3P	250 V; 2 A; PA66	IEC 61347-2-7 IEC 61347-2-13	Tested in appliance
Connector to test board (CON4)	C	Yueqing Baizhan Electronic Co., Ltd	PH-2P-5.0	100 V; 2 A; PA66	IEC 61347-2-7 IEC 61347-2-13	Tested in appliance



Test Report No. IL3326900.01 .
1953 - " 12

Critical components

Page 45 of 98

Report No. 6248108.50A

IEC 60598-2-22			
Clause	Requirement + Test	Result - Remark	Verdict

ANNEX 1	TABLE: Critical components information	P
----------------	---	----------

Object / part No.	Code	Manufacturer/ trademark	Type / model	Technical data	Standard	Mark(s) of conformity ¹⁾
Luminaire						
LED	C	SHENZHEN SMALITE SEMICONDUCTOR CO LTD	SL-WZ2835FTA-12EAIH	CCT: 4000 K; V _r = 2,8 V- 3,2 V; I _r = 150 mA	IEC 60598-2-22 IEC 60598-2-1 IEC/TR 62778	Tested in appliance
PCB for LED	C	GRANDWORK ELECTRONICS CO LTD	GLW-5	V-0; 130 °C UL (E343783)	IEC 60598-2-22 IEC 60598-2-1	Tested in appliance
Indicator	C	Shenzhen Czinelight Technology Co.,Ltd	F5	V _r =3 V; I _r =10 mA; Green/Red	IEC 60598-2-22 IEC 60598-2-1	Tested in appliance
Plastic enclosure & Cover on battery	C	Yuyao Jiezhong Electric Appliance Co., Ltd.	--	PC	IEC 60598-2-22 IEC 60598-2-1	Tested in appliance
Safety Sign	C	Yuyao Jiezhong Electric Appliance Co., Ltd.	--	PET	IEC 60598-2-22 IEC 60598-2-1	Tested in appliance
Terminal block (for input connection)	B	Putian Hanjiang Fucon Electronics Co., LTD	CM238	AC 450 V; 0,5...2,5 mm ² ; T120	EN 60998-2-2 EN 60998-1	VDE 40041279
Alternative	B	Degson Electronics Co., Ltd.	DG238-10.0	AC 450 V; 0,75...2,5 mm ² ; T110	EN 60998-2-2 EN 60998-1	VDE 40025914
Alternative	B	Foshan Ojun Electronic Technology Co.,Ltd	OJ863	AC 450 V; 0,5...2,5 mm ² ; T110	EN 60998-2-2 EN 60998-1	ENEC 35-111906
Alternative	B	XIAMEN GHGM INDUSTRIAL TRADE CO.,LTD.	JCC series	AC 450 V; 0,5...2,5 mm ² ; T105	EN 60998-2-2 EN 60998-1	VDE 40050942
Diffuser (Safety Sign)	C	Zhongshan xingde lgp Co.,Ltd	--	PC	IEC 60598-2-22 IEC 60598-2-1	Tested in appliance
Internal wire (connect to input of emergency driver)	C	TONGXIANG TENGFEI ELECTRON & WIRING CO LTD	3266	20 AWG; 300 V; T125; UL (E238015)	IEC 60598-2-22 IEC 60598-2-1	Tested in appliance
Alternative	C	GUANGDONG TIANHONG CABLES CO LTD	3266	20AWG; 300 V; T125; UL (E337280)	IEC 60598-2-22 IEC 60598-2-1	Tested in appliance

Test Report No. IL3326900.01 .
1953 - " 12

Critical components

Object / part No.	Code	Manufacturer/ trademark	Type / model	Technical data	Standard	Mark(s) of conformity ¹⁾
Internal wire (connect to LED module)	C	DONGGUAN YIAO ELECTRONICS CO LTD	3239	22 AWG; 200°C; UL (E348933)	IEC 60598-2-22 IEC 60598-2-1	Tested in appliance
Alternative	C	SHENZHEN RUNQI WIRE CO LTD	3239	22 AWG; 200°C; UL (E495994)	IEC 60598-2-22 IEC 60598-2-1	Tested in appliance
Alternative	C	SHENZHEN CITY WEIDAXUAN WIRE&CABLE CO LTD	3239	22 AWG; 200°C; UL (E472430)	IEC 60598-2-22 IEC 60598-2-1	Tested in appliance
Alternative	C	DONG GUAN SHENG PAI ELECTRIC WIRE & CABLE CO LTD	3239	22 AWG; 200°C; UL (E347603)	IEC 60598-2-22 IEC 60598-2-1	Tested in appliance
Internal wire (connect to battery)	C	TONGXIANG YUANHUA ELECTRIC CO LTD	UL1569	22 AWG; 300 V; T105; UL (E257072)	IEC 60598-2-22 IEC 60598-2-1	Tested in appliance
Alternative	C	Dongguan Cheng Xing Electronic Co Ltd	UL1569	22 AWG; 300 V; T105; UL (E249743)	IEC 60598-2-22 IEC 60598-2-1	Tested in appliance
Alternative	C	Qifurui Electronics Co	UL1569	22 AWG; 300 V; T105; UL (E211048)	IEC 60598-2-22 IEC 60598-2-1	Tested in appliance
Alternative	C	Dongguan Worldful Electric Wire Co Ltd	UL1569	22 AWG; 300 V; T105; UL (E317806)	IEC 60598-2-22 IEC 60598-2-1	Tested in appliance
Alternative	C	TONGXIANG ZHOUQUAN HONGKE ELECTRIC FACTORY	UL1569	22 AWG; 300 V; T105; UL (E365749)	IEC 60598-2-22 IEC 60598-2-1	Tested in appliance
Test switch	C	Z10 Safety Limited	--	< 20 mA	IEC 60598-2-22 IEC 60598-2-1	Tested in appliance
Battery	B	Z10 Safety Limited	Li18650-2500mAh	3,6 V 2500 mAh; 18 Wh; 1S2P	IEC 62133-2	TUV SUD CB SG PSB-BT-03695
					IEC 62620	DEKRA 6168230.51
Plastic cover under battery	C	Yuyao Jiezhong Electric Appliance Co., Ltd.	--	PC	IEC 60598-2-22 IEC 60598-2-1	Tested in appliance

Test Report No. IL3326900.01 .
1953 - " 12

Critical components

Object / part No.	Code	Manufacturer/ trademark	Type / model	Technical data	Standard	Mark(s) of conformity ¹⁾
LED emergency driver	C	Ginkgo Electric (Zhejiang) Ltd	PXOP-EM-MEXS-AST-V0.1	Input: 220 V - 240 V; 50 / 60 Hz; 0,06 A; max 5W Output: 5 Vdc; 550 mA; 1,5 W; U _{out} =15 Vdc; SELV; integral	IEC 61347-2-7 IEC 61347-2-13	Tested in appliance
LED emergency driver						
PCB for emergency driver	C	GRANDWORK ELECTRONICS CO LTD	GLW-2	V-0; 130 °C UL (E343783)	IEC 61347-2-7 IEC 61347-2-13	Tested in appliance
PCB for emergency driver (alternative)	C	WELL-TECH (HUIZHOU) CIRCUIT CO LTD	WD-M	V-0; 130 °C UL (E363740)	IEC 61347-2-7 IEC 61347-2-13	Tested in appliance
Connector to battery (CON2)	C	Yueqing Baizhan Electronic Co., Ltd	XH-3P	250 V; 2 A; PA66	IEC 61347-2-7 IEC 61347-2-13	Tested in appliance
Connector to test board (CON4)	C	Yueqing Baizhan Electronic Co., Ltd	PH-2P-5.0	100 V; 2 A; PA66	IEC 61347-2-7 IEC 61347-2-13	Tested in appliance
Y capacitor (C8)	B	Xiamen Sino faith Electronic Technology Co., Ltd	HCY	Y1; AC 400 V; 1000 pF; 125 °C	IEC/EN 60384-14	VDE 40034792
Y capacitor (C8) (alternative)	B	Murata Mfg.Co.,Ltd.	KX	Y1; AC 250 V; 1000 pF; 125 °C	IEC/EN 60384-14	VDE 40002831
Y capacitor (C8) (alternative)	B	Shenzhen Weidy Industrial Development Co., Ltd.	WYD2H102M	Y1; AC 500 V; 1000 pF; 125 °C	IEC/EN 60384-14	VDE 40051104
Fuse resistor (RF1)	C	SHENZHEN DONGLING ELECTRONIC CO LTD	FKN	10 Ω / 1 A UL (E482687)	IEC 61347-2-7 IEC 61347-2-13	Tested in appliance
X capacitor (C20)	B	Rugao Shuangcheng Electronic Co., Ltd.	MKP	X2; AC 275 V; 0,1 uF; 110 °C	IEC 60384-14	VDE 40025673
X capacitor (C20) (alternative)	B	Sichuan Zhongxing Electr Co., Ltd	MKP61	X2; AC 275 V; 0,1 uF; 110 °C	IEC 60384-14	VDE 40032626
X capacitor (C20) (alternative)	B	Sichuan Zhongxing Electr Co., Ltd	MKP61	X2; AC 305 V; 0,1 uF; 110 °C	IEC 60384-14	VDE 40032626



Test Report No. IL3326900.01 .
1953 - " 12

Critical components

Page 49 of 98

Report No. 6248108.50A

IEC 60598-2-22

Clause	Requirement + Test	Result - Remark	Verdict
--------	--------------------	-----------------	---------

Object / part No.	Code	Manufacturer/ trademark	Type / model	Technical data	Standard	Mark(s) of conformity ¹⁾
X capacitor (C20) (alternative)	B	DAIN ELECTRONIC CO.,LTD	MPX	X2; AC 275 V; 0,1 uF; 110 °C	IEC 60384-14	VDE 40018798
X capacitor (C20) (alternative)	B	Hongzhi Enterprises Ltd.	MPX	X2; AC 275 V; 0,1uF; 110 °C	IEC 60384-14	VDE 40023936
Transformer	C	Haining FulidaElectronic Co., Ltd	F0063	Class B	IEC 61347-2-7 IEC 61347-2-13	Tested in appliance
Transformer bobbin	C	CHANG CHUN PLASTICS CO LTD	T375HF	V-0; 150°C UL (E59481)	IEC 61347-2-7 IEC 61347-2-13	Tested in appliance
Magnet wire (PRI winding)	C	ZHEJIANG HONGBO TECHNOLOGY CO LTD	UEW/155	155 °C UL (E221719)	IEC 61347-2-7 IEC 61347-2-13	Tested in appliance
Triple insulated wire (SEC winding)	B	SHANGHAI SURAN ELECTRONICS FACTORY	TIW-B	130°C; Reinforced insulation	IEC/EN 62368-1	VDE 40039647
Insulation tape	C	JINGJIANG JINGYI ADHESIVE PRODUCT CO LTD	JY25-A/130	130°C; UL (E246950)	IEC 61347-2-7 IEC 61347-2-13	Tested in appliance
Insulation tube	C	DONGGUAN CITY CHANGJIE METALS & PLASTIC PRODUCTS CO LTD	CJ-TT-L	200 °C; UL (E338209)	IEC 61347-2-7 IEC 61347-2-13	Tested in appliance

Supplementary information:

¹⁾ Provided evidence ensures the agreed level of compliance. See OD-CB2039.

The codes above have the following meaning:

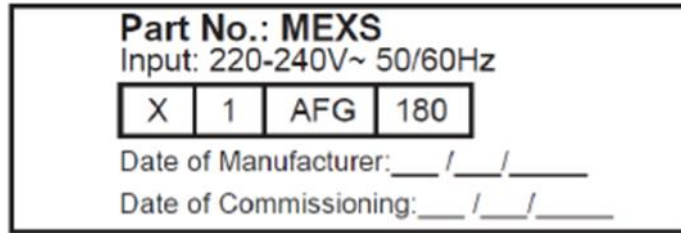
- A - The component is replaceable with another one, also certified, with equivalent characteristics
- B - The component is replaceable if authorized by the test house
- C - Integrated component tested together with the appliance
- D - Alternative component

Note: License available upon request.



Test Report No. IL3326900.01 .
1953 - " 12

Pictures



(with a minimum height of 15 mm)

On terminal block



Near indicator and test button



On battery

Secondary Li-ion Battery Pack
Li18650-2500mAh
3.6V 2500mAh 9Wh



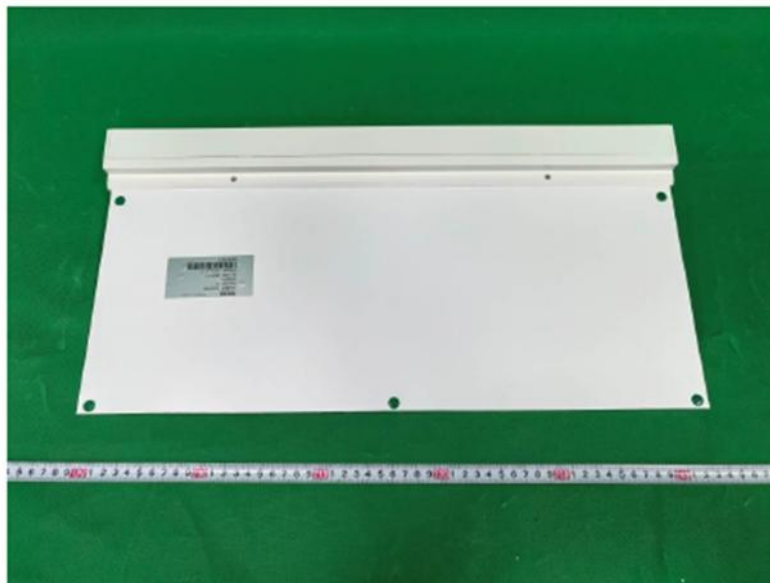
Note:

1. The height of the graphical symbol of lamp not suitable for use under moisture shall be at least 5 mm.
2. The symbol combination of WEEE logo shall have a minimum height of 7 mm.
3. The CE marking must have substantially the same vertical dimension, which may not be less than 5

Test Report No. IL3326900.01 .
1953 - " 12



Overview for model MEXS



Back view for model MEXS

Test Report No. IL3326900.01 .
1953 - " 12

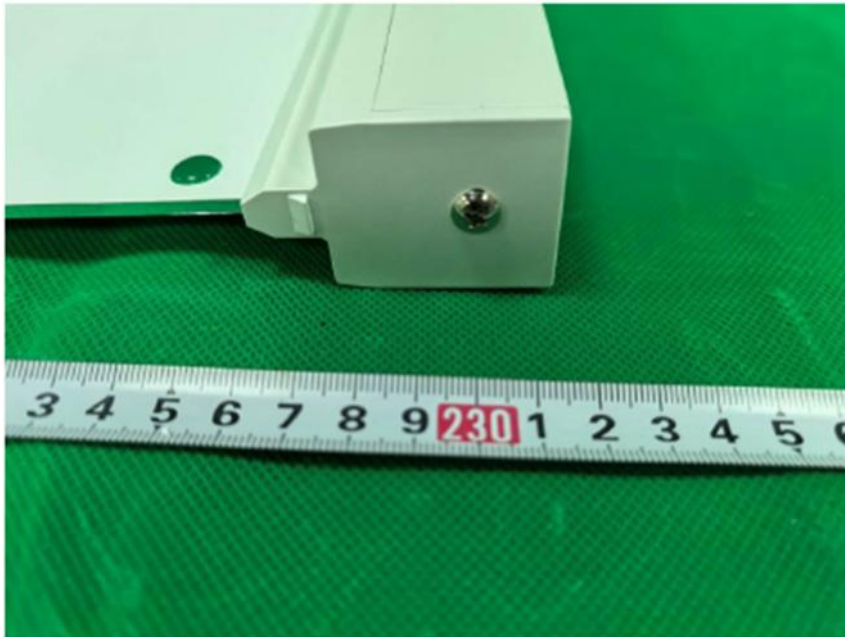


Test switch and indicator for MEXS



Cable entry and installation hole

Test Report No. IL3326900.01 .
1953 - " 12



Screws on enclosure (on both ends)



Internal view

Test Report No. IL3326900.01 .
1953 - " 12

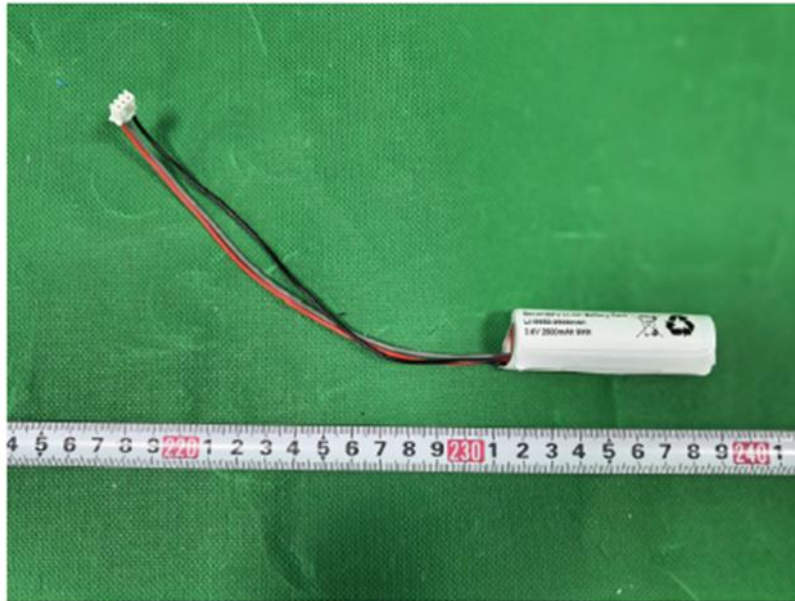


Terminal block (for input connection)



Battery; battery cover

Test Report No. IL3326900.01 .
1953 - " 12

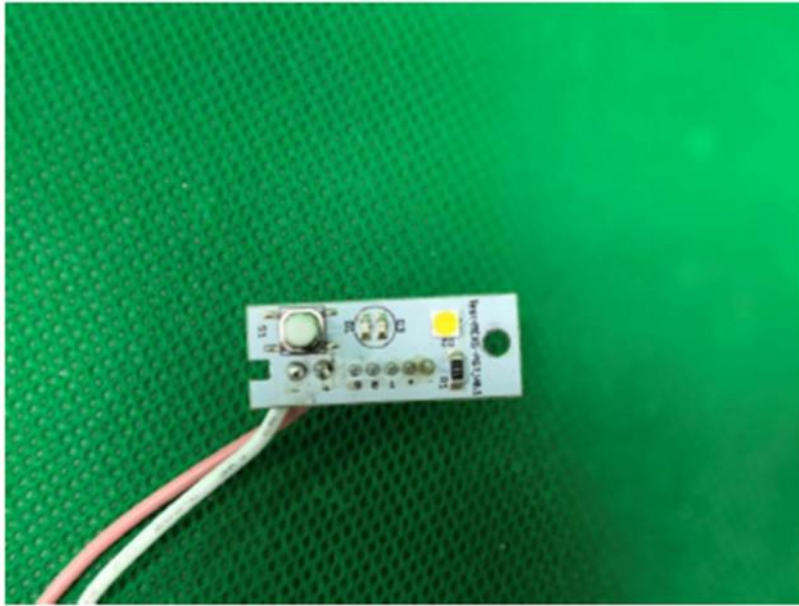


Battery

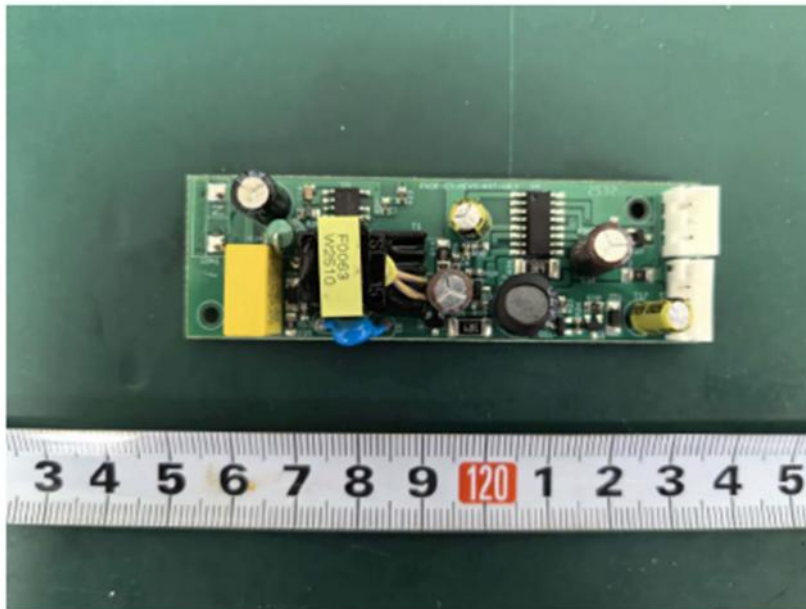


LED

Test Report No. IL3326900.01 .
1953 - " 12



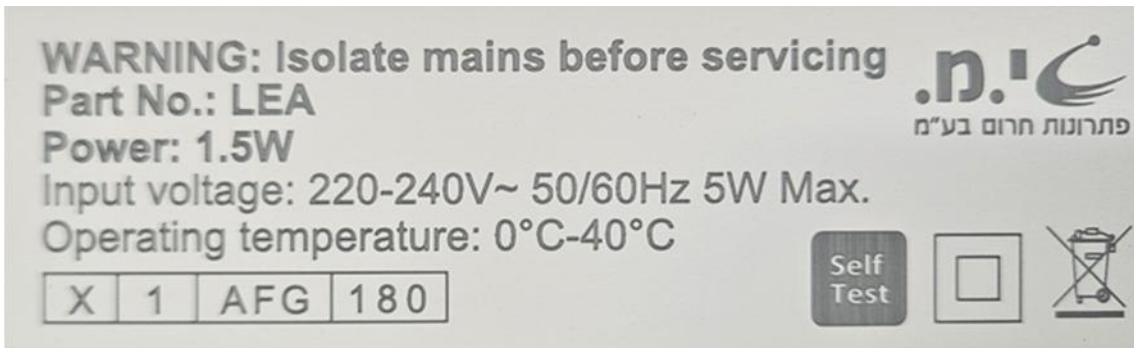
PCB for test board (top view)



PCB for emergency driver (top view)



Test Report No. IL3326900.01 .
1953 - " 12



Test Report No. IL3326900.01 .
1953 - " 12

חזון איש 58 בני ברק | טלפון 054-8421418
ym-lighting.co.il | izikmos@gmail.com

שלט יציאה חניון דגם LEA

מפרט:
שלט יציאת חירום חזן/חזן גודל, תאורת חירום קבועה למשך 3 שעות.
צריכת השמל נמוכה במצב המתנה. נרשמת בדיקה עצמית וזמנית.
סוללה לחירום משולבת. מתאים לשימוש פרטיים כגון חניה, מבני חינוך ומשרדים.

חבונת עיקריות

- כפתור בדיקה משולב
- מרחק ראייה 30 מטר
- טעינה מהירה של הסוללה (8שעות)
- כולל תצוגה לכל הצדדים, ניתן להזמין בגודל "אזור מחסה"
- צריכת השמל נמוכה במצב המתנה (0.5W)
- **טעינה ראשונה של הסוללה עד 16 שעות
- מצב לא-מתוחק בלבד**

מק"ט	תיאור	מתקן בדיקה	טמפרטורת פעולה	משקל נטו
MEXS-AST	LED exit sign 30m viewing distance self-test - AST	AST	0°C-40°C	0.8kg
MEXS-MT	LED exit sign 30m viewing distance Manual test	AST	0°C-40°C	0.8kg

זהו גוף תאורה עם בדיקה עצמית. בדיקת פונקציה מתבצעת אוטומטית אחת לחודש וגומשכת 30 שניות. בדיקת משך מלאה מתבצעת אוטומטית כל 52 שבועות. הבדיקה המלאה הראשונה מתבצעת אוטומטית בתוך 4 השבועות הראשונים לאחר חיבור הגוף למתח הרשת.

End of Report

"